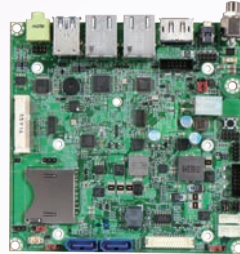


PCOM-C640

PCOM-C640 is NANO-ITX carrier board with triple display, Gigabit Ethernet, Audio, USB 3.0, SATA. It's a powerful carrier which is suitable for system. Portwell can provide COM Express® carrier design guide for your own carrier board development as a reference



NANO-ITX Form Factor Evaluation Carrier Board for Type VI module

Portwell PCOM-C640 is a NANO-ITX form factor carrier with COM Express® Type VI row connectors. It's suitable for evaluation testing of Portwell's Type VI COM Express® modules for 1U Server system. We also provide carrier board design guide for your own carrier board development as a reference.



With PCOM-C640 carrier board, Portwell now has various carriers in different form factors to help customers on developing new platform for both board and system perspectives. Customers can easily begin to develop on new application with Portwell's COM Express® Type VI module.

FEATURES

- COM Express® carrier board is compatible with the Portwell Type VI COM Express® modules
- NANO-ITX form factor can meet most standard mounting spaces and provide more expansions and displays
- Support Rear I/O, DP, RJ45, USB 2.0 & 3.0

ORDERING GUIDE

AB1-3D18Z	(R).PCOM-C640.Support TYPE VI. NANO-ITX Form Factor.COM Express Carrier Board
-----------	--

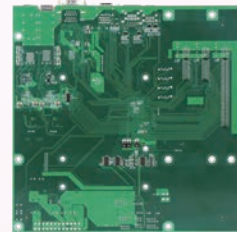
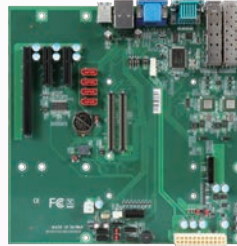


IoT Solutions Alliance

PCOM-C609



PCOM-C609 carrier offers powerful and reliable solution to customer who has demand of high speed 10 Gigabit Ethernet. It is the first carrier with 10 Gigabit Ethernet with carrier board design guide which can be provided to customer



Micro-ATX Form Factor Evaluation Carrier Board for COM Express® Rev 2.1 Type VI Module.

Portwell PCOM-C609 is designed with Micro-ATX form factor with COM-Express® Type IV row connectors; it's suitable for evaluation testing of Portwell's Type 6 COM Express® modules with USB 3.0, PCI-E, HDMI, VGA, SATA, TPM and 10 Gigabit Ethernet support. Portwell is able to provide carrier board design guide for customer to design their carrier board as a reference.

PCOM-C609 is the first carrier board which can support 10 Gigabit Ethernet function. This can shorten customer's carrier board developing time and make the development quickly and easily. The PCOM-C609 provides COM Express® Type 6 support in addition to suit wide range of device connectivity for prototype and flexibility.

FEATURES

- COM Express® carrier board is compatible with the Portwell Type VI COM Express® modules
- Micro-ATX form factor meets most standard mounting spaces and provides more expansions displays
- Support 2x 10 Gigabit Ethernet & 1x Gigabit Ethernet

ORDERING GUIDE

AB1-3D19	(R).PCOM-C609.Support TYPE VI. Micro-ATX Form Factor.COM Express Carrier Board
----------	---

