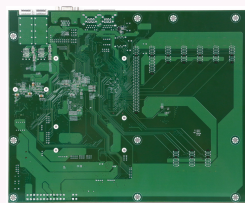
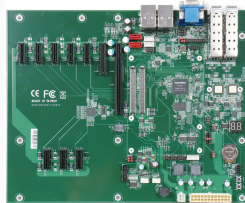


PCOM-C700

PCOM-C700 Carrier supports COM Express® Rev3.0 Type 7 specification, offering high bandwidth 10GbE and NC-SI interfaces, PCI Express expanded up to 32 lanes



Portwell's 1st COM Express® Rev3.0 Type 7 Carrier which supports four 10GbE optical and fiber phys, NC-SI interface and up to 32 PCI Express lanes.

Portwell PCOM-C700 is designed with ATX form factor with COM Express® Type VII row connectors; it's suitable for evaluation testing of Portwell's Type 7 COM Express® modules with USB 3.0, PCI-Express, SATA, TPM and 10 Gigabit Ethernet support. Portwell is able to provide carrier board design guide for customer to design their carrier board as a reference.

PCOM-C700 is the first carrier board which can support 10-Gigabit Ethernet function. This can shorten customer's carrier board developing time and make the development quickly and easily. The PCOM-C700 provides COM Express® Type 7 support in addition to suit wide range of device connectivity for prototype and flexibility.

FEATURES

- 4x 10GbE support
- Console redirection support
- BMC AST2500 support

ORDERING GUIDE

Contact us

(R).PCOM-C700. TYPE VII. ATX Form Factor.
COM Express® Carrier Board



SATA 3.0



USB 3.0



Giga LAN



Watch DOG



GPIO



IoT Solutions
Alliance