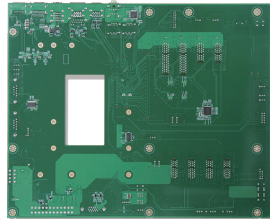
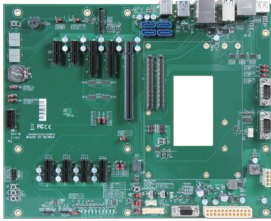


PCOM-C60B

PCOM-C60B is ATX Form Factor Evaluation Carrier Board for COM Express® Revision 3.0 Type VI Module



FEATURES

- ATX form factor COM Express® type VI evaluation carrier board
- Support 4x USB 3.1, 8x USB 2.0, 4x SATA III ports
- Support multiple display (DP, VGA, LVDS)



Portwell PCOM-C60B is designed with ATX form factor with COM Express Type VI row connectors, suitable for evaluation testing of Portwell's Type VI COM Express modules on PCIe, PEG, VGA/DP/LVDSI, USB and SATA interface. Portwell also provides carrier board design guide for customer's own carrier board development reference.

General

Product	PCOM-C60B
Form Factor	ATX Form Factor (305 X 244mm)
Processor	Depends on Module
Core	
Freq.	
Turbo	
Cache	
Processor Graphics	
Graphics Base Frequency	
Graphics Max Dynamic Frequency	
HW Encoding	
HW Decoding	
HW Acceleration	
Processor TDP	
BIOS	
ECC Memory Supported	
Memory	

I/O Interface

SATA	4x SATA III		
USB	4x USB 3.1 Gen2 (Port 0~3) 8x USB 2.0 (Port 0~7)		
Ethernet	2 x GbE		
Serial I/O	GPIO	8 bit GPIO	
	I ² C	base on module design	
	SMBus	base on module design	
	UART	2x DB9 connector	
PEG	1x PCIe Gen 3 x16		
PCI Express	8x PCIe Gen 3 x1 (including 2x PCIe x4 slots)		
Display	Default	Options	Resolution
	VGA	VGA	Depends on module
		DDI2	
	LVDS	eDP	
DDI-DP	24bit dual channel LVDS DP1.2		
Security	N/A		

MECHANICAL & ENVIRONMENT

Dimension	305 X 244mm
Power DC IN	Support ATX power supply
Storage Temperature	-40°C to 85°C
Operation Temperature	-40°C to 85°C
Certification	Contact us
MTBF	Contact us
Vibration	Contact us
OS	Depends on Module

ORDERING GUIDE

Product	Ordering P/N	Status
PCOM-C60B	AB1-3G22Z	Contact us

BLOCK DIAGRAM

PCOM-C60B

COM Express Type 6
Carrier Board

-40 ~ +85° C

