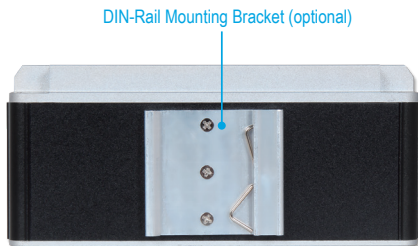
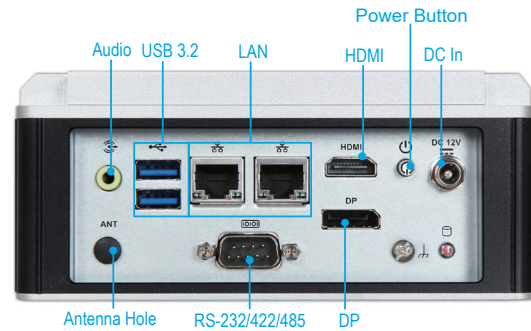
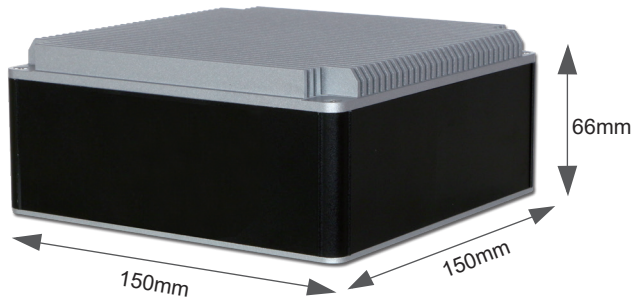


# WEBS-21J0-ASL

Embedded Rugged Fan-less System with Intel Atom® x7000RE Series SoC based Nano-ITX Form Factor Embedded Board



Designed with Intel Atom® x7000RE Series Processor, Portwell's rugged and compact WEBS-21J0-ASL features two 2.5 Gigabit Ethernet ports, one M.2 E Key, one M.2 B Key socket, dual 4K displays, and one serial port. Its fanless design ensures silent operation, reliability and low maintenance rate. The WEBS-21J0-ASL is an ideal platform for IoT applications in industrial automation, robotics control, medical equipment, outdoor gateway, digital signage and more.

The WEBS-21J0-ASL is also available preassembled with Hailo-8™ AI Acceleration Module, which delivers up to 26 TOPS of AI performance.

## FEATURES

- Low power Intel Atom® x7000RE Series SoC
- Up to 16GB DDR4 3200MT/s non-ECC SO-DIMM
- Support one DP and one HDMI display
- Support one M.2 E Key and one M.2 B Key socket for wireless connectivity
- Support one RS-232/422/485 port (selectable via BIOS)
- One Antenna hole for WiFi module
- Support a wide -40°C to 60°C operating temperature range
- On-board TPM 2.0
- Optional preassembled with Hailo-8™ M.2 AI Acceleration Module (A+E key)



## System

M/B	NANO-6064-ASL
CPU	Intel Atom® x7000RE Series Processor ( Up to 9W)
BIOS	AMI uEFI BIOS
Memory	- 1x non-ECC DDR4 3200MT/s SO-DIMM up to 16GB - Support In-Band ECC (IBECC)
Storage	- 1x SATAIII port - 1x M.2 B Key 2280 (SATAIII)
Watchdog Timer	Programmable Watchdog Timer
H/W Status Monitor	System monitor (Voltage and Temperature)
Expansion	- 1x M.2 E Key 2230 - 1x M.2 B Key 3052+2280 (shared with M.2 2280 SATAIII socket)

## External I/O

Serial Port	1x RS-232/422/485 port (selectable via BIOS)
Display	- 1x HDMI 2.0b, 4096x2160 @60Hz - 1x DP 1.4, 4096x2304 @60Hz
USB	2x USB 3.2 Gen2 (Optional kit: additional 2x USB 3.2 Gen2 ports on the front)
Audio	Audio Jack with Line-out with Realtek ALC897 Audio controller
Ethernet	2x Intel® 2.5GbE Ethernet controller (I226-IT); 2x RJ45 connectors
Other	TPM 2.0 on-board

## Power Supply Unit

Power Input	DC 12V input
-------------	--------------

## Environmental

Operation Temperature	-40°C ~ 50°C (with M.2 SSD, 2.5" SSD, Hailo-8™ module) -40°C ~ 60°C (with 2.5" SSD, Hailo-8™ module, without M.2 SSD)
Storage Temperature	-40°C ~ 85°C
Relative Humidity	40°C, 95%RH non-condensing
Operation Vibration	3Grms/10-500Hz, IEC 60068-2-6
Operation Shock	50G, 11 msec, IEC 60068-2-27

## Mechanical

Dimension	150 (W) x 150 (D) x 66 (H) mm
Weight	1.4 Kg
Mounting	Wall, DIN-rail mounting



\*All information provided is subject to change without notice. Last updated: November 1, 2024