



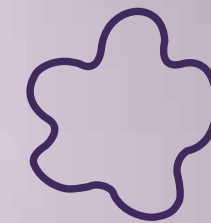
Smart Retail



Public Information



Easy to use



Connectivity Display System

Affordable

Fashion style



www.portwell.com.tw

IP65

Connectivity

Flexible



LEAD

The Client-Cloud Future

The Age of Connection

The Internet of Things (IoT) makes it possible to link every single device together, so our endless imagination now becomes a limitless possibility for the future. With IoT infrastructure, it's possible to change how we manufacture, improve how we live and even mold how we receive information into a smart pattern.

IoT is no longer just a topic of conversation. Combined with different ideas, applications and the construction of infrastructure, it becomes real and burgeoning market. We have seen many leading IoT trials all worldwide. The massive adoption of this groundbreaking technology is not too far away. What follows are some feasible disciplines as example of viable IoT applications.

Smart Retail

Smart Retail is a perfect application and Amazon Go is an excellent example. Once again, connectivity plays an important role. Without connectivity IoT provides, the AI system will have no source to analyze; customers cannot receive push advertisements based on the result of calculations. And something as simple and convenient as self-checkout becomes impossible if there is no way to verify one's identity. The importance of IoT is obvious in such scenario.

KIOSK

Combining with the convenience and versatility of the Internet, it's becoming more and more common for people to turn to self-service machine to fulfill their needs. The application is already popular in restaurants, transportation rental system, library and many other situations where convenience and speedy transaction are key. The development in kiosks is thriving and increasing. We look forward to seeing future growth in this discipline.

Public Information (POI)

Information is key and people want it now and they want it fast. The public information system is the solution for them. This might be the requirement in transportation hubs like train station or airport. It might also happen in government facilities. Or it might be the demand in entertainment environment as department store, amusement park, and so forth. IoT provides a complete network for information providers and clears the obstacles to information interaction.



KIOSK

Americas

American Portwell
(Fremont, CA)
44200 Christy St., Fremont, CA 94538, USA
Tel: +1-510-403-3399
Fax: +1-510-403-3184
E-mail: info@portwell.com
http://www.portwell.com

Portwell Latin America
(Brazil)
Rua Engenheiro Roberto Fischer, 208, Sala
No.3-Parque Industrial software
CEP 81250-025-CIC- Curitiba-Brazil
Tel: +55(41)-3121-7200
Tel: +55(41)-3121-7201
http://www.portwell.com.br

China

Shanghai Portwell
(201612), Room 1303-1, Building 33,
No.258, Xinhuan Highway, Songjiang
District, Shanghai
Tel: +86-21-5771-2505
Fax: +86-21-5772-2965
E-mail: info@portwell.com.cn
http://www.portwell.com.cn

Japan

Portwell Japan, Inc.
(Tokyo)
〒112-0011 4-27-10, Sengoku,
Bunkyo-ku, Tokyo, Japan
Tel: +81-3-6902-9225
Fax: +81-3-6902-9226
E-mail: info@portwell.co.jp
http://www.portwell.co.jp

Portwell Japan, Inc.
(Osaka)
〒532-0004 Ste.501 Nippo Shin-osaka
Dai-2 Bldg. 1-8-33 Nishi-Miyahara,
Yodogawa-ku, Osaka Japan
Tel: +81-6-4807-7721
Fax: +81-6-4807-7720
E-mail: info@portwell.co.jp
http://www.portwell.co.jp

Korea

Portwell Korea, Inc.
O-Biz Tower 1901, No.126,
Beolmal-ro, Dongan-gu, Anyang-si,
Gyeonggi-do, Korea, 431-060
Tel: +82-31-450-3043
Fax: +82-31-450-3044
E-mail: info@portwell.co.kr
http://www.portwell.co.kr

Europe

European Portwell
Schillingweg 3, 2153 PL
Nieuw Vennep, The Netherlands
Tel: +31-252-620790
Fax: +31-252-621325
E-mail: info@portwell.eu
http://www.portwell.eu

Portwell Deutschland
GmbH
Otto-Hahn-Str. 48, D-63303 Dreieich
Tel: +49-6103-3008-0
Fax: +49-6103-3008-199
E-mail: info@portwell.eu
http://www.portwell.de

Portwell UK Ltd.

Office TH2
Trident House, Trident Park Basil Hill
Road, Didcot, OX11 7HJ, UK
Tel: +44-1235-750760
Tel: +44-1235-750761
E-mail: info@portwell.eu
http://www.portwell.eu

India

Portwell India
Technology
7/3, 3rd Floor, Jeet
Dynasty, Swamy Vivekananda Road, Nagav
arapalya, Bangalore-560093, India
Tel: +91-80-407-82700
E-mail: info@portwell.in
http://www.portwell.in

Portwell, Inc. (Headquarters)

No. 242, Bo'AI St., Shu-Lin Dist,
New Taipei City 238, Taiwan
Tel: +886-2-77318888
Fax: +886-2-77319888
E-mail: info@portwell.com.tw
http://www.portwell.com.tw

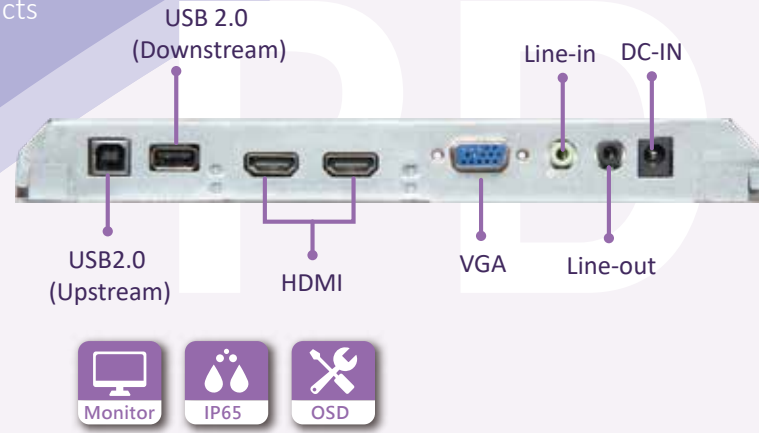


Why LEAD

LEAD series is a family of brand-new panel PC products from Portwell. As an Associate member of the Intel® Internet of Things Solutions Alliance, Portwell is already aware of the trend that there are increasing demands in system and the future of IoT. Now we hope to LEAD the market and provide our customers with the most valuable products with incredible flexibility and selectivity.

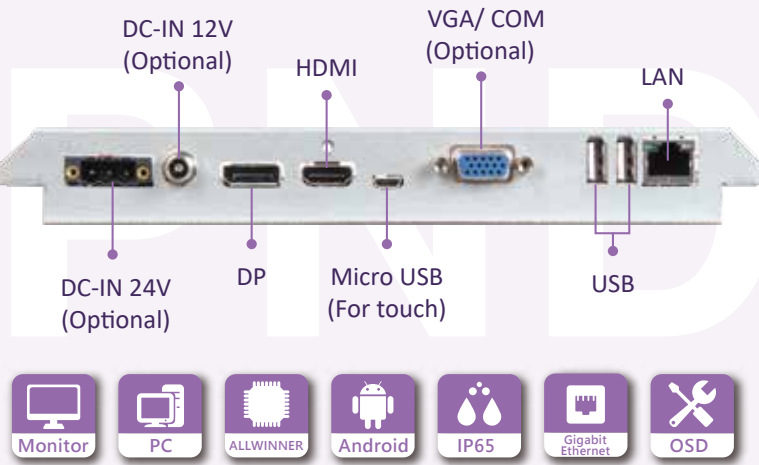


2 Sizes



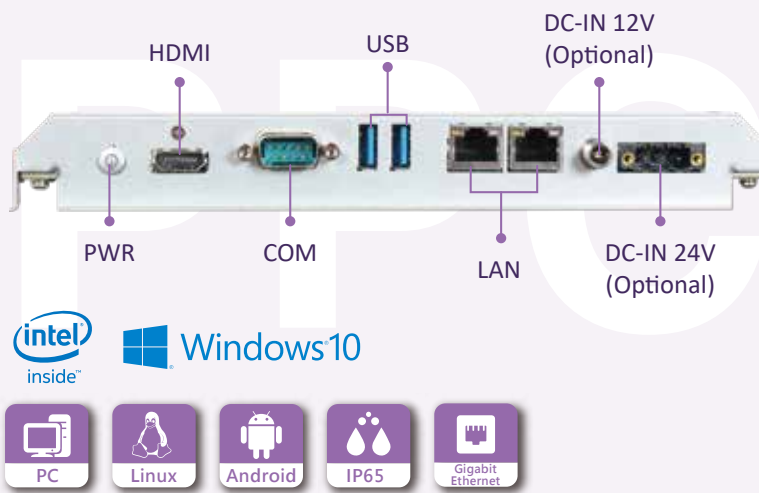
LEAD-PD Series

As the entry product of LEAD series, Portwell Display or PD shares the fantastic stylish appearance and design common to Portwell products. This allows our customers to adopt the PD in the environment that needs to face end users. The full HD and ten-point multi-touch panel can provide the best user experience. The various I/O allows our customers to input information from different sources. This low-cost entry monitor will be your best choice for the occasions that don't need any computing power.



LEAD-PND Series

Portwell Networking Display or PND has network connection ability with LAN port which adopts Gigabit Ethernet. With Allwinner A83T, PND is equipped with basic computing ability compared to PD. Combining the two features, PND is suitable for those who want to introduce IoT concept into their applications or environments. The OS adopts Android system, which provides users with high flexibility to fulfill their own software requirement. The VGA/HDMI/DP ports enclose the most common signal inputs now. PND provides users with the ability to control the OSD function by Tx/Rx of RS232 which further enhances the ability of PND and helps customers to easily adopt an IoT scenario.

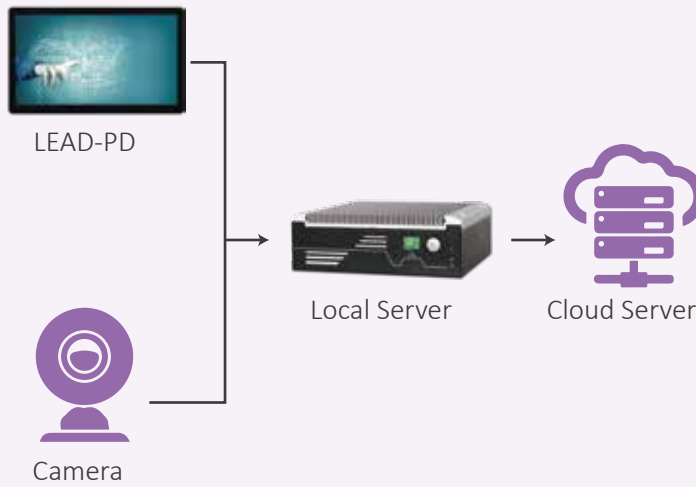


LEAD-PPC Series

Portwell Panel PC or PPC provides the highest computing power for our customers by adopting Intel Apollo Lake dual-core processor E3930. By offering an optional operating system, users can choose either Win 10, Android or Linux Ubuntu, which provides them with incredible flexibility. The Gigabit Ethernet is available and can be up to two ports. The bezel-free characteristic makes it also suitable to be placed at occasions that face end customers. The serial port control ability makes it still good for conventional industrial automation application.

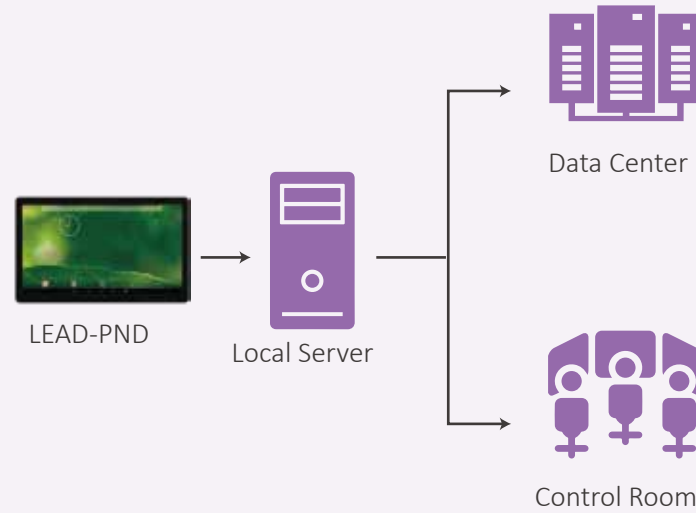
New Experience in Retail

What would you expect when entering a retail shop? When you arrive at the store, the camera will catch your image and analyze your gender, age and other physical characteristics with the local server. The information will be compared with the data base. According to the result, the system would be able to provide you with customized advertisement, promotion and the location of the merchandise. Afterward, the system should lead you to the fastest check-out desk to avoid waiting. Or if you don't want to carry all the bags, why not just tell the system to ship them back to your home? Let the friendlier and more customized shopping experience entertain your day.



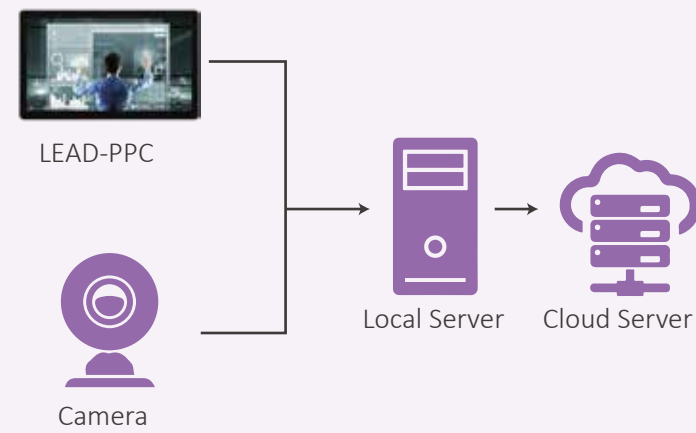
No Maze in Airport

Have no idea where you are, what to do next in the flood of flight information? What if the airport information can be personalized just for you? In the future, once arriving the airport, besides the huge information signage, more small panel PCs are waiting for you. By typing or selecting your flight number, the system will let you know where to check in on the map, how long the queue is, expecting time for custom check, location and distance of the gate. Instead of a nightmare to navigate, the airport becomes a personal and pleasant journey.



Imagination of Future Exhibition

Get trapped in the exhibition hall? Let LEAD help you! With face recognition software, the building can remember you. Once you search a specific booth by the system, if you get lost in the hall, find the nearest LEAD. The system will recognize you and redirect you to your destination. No more struggling for finding the right booth. Now you can spend that time enjoying the event.



Quick Selection Guide

| Model Name | LEAD-PD-2150 LEAD-PD-2360 | LEAD-PND-2150-AV LEAD-PND-2360-AV | LEAD-PND-2150-AC LEAD-PND-2360-AC | LEAD-PND-2150-BV LEAD-PND-2360-BV | LEAD-PND-2150-BC LEAD-PND-2360-BC | LEAD-PPC-2150-A LEAD-PPC-2360-A | LEAD-PPC-2150-B LEAD-PPC-2360-B |
|-------------------------|--|---|---|---|--------------------------------------|--|---|
| Part Number | AL8-3081 AL8-3082 | AL6-3276 AL6-3272 | AL6-3275 AL6-3271 | AL6-3274 AL6-3270 | AL6-3273 AL6-3269 | AL6-3265 AL6-3267 | AL6-3266 AL6-3268 |
| Display | | | | | | | |
| LCD Size | 21.5" / 23.6" | | 21.5" / 23.6" | | | 21.5" / 23.6" | |
| Resolution | FHD 1920 x 1080 | | FHD 1920 x 1080 | | | FHD 1920 x 1080 | |
| Brightness | 250 cd/m ² | | 250 cd/m ² | | | 250 cd/m ² | |
| Contrast Ratio | 1000: 1 | | 1000: 1 | | | 1000: 1 | |
| Panel Type | TN | | TN | | | TN | |
| Viewing Angle | 170° (H) / 160° (V) | | 170° (H) / 160° (V) | | | 170° (H) / 160° (V) | |
| Touch Screen | Projected Capacitive Multi-Touch | | Projected Capacitive Multi-Touch | | | Projected Capacitive Multi-Touch | |
| System | | | | | | | |
| SOC | N/A, Monitor Only | | AllWinner A83T Octa-Core Cortex™ A7 CPU | | | Intel® Atom® Dual-Core x5-E3930 (1.3GHz, up to 1.8GHz) | |
| Memory | | | 1GB DDR3L on board | | | 8G DDR3L/1600 SO-DIMM | |
| LAN Chip | | | Realtek® RTL8211E | | | Intel® WG1210T | |
| Audio Codec | | | AllWinner AXP813 | | | Realtek® ALC892 | |
| Storage Device | | | 16G eMMC on board | | | 128G TLC mSATA | |
| OS | | | Android 6.0 | | | Windows 10 IoT / Android 6.0 / Linux™ Ubuntu 16.10 | |
| I/O Interface | | | | | | | |
| Serial Port | N/A | N/A | 1 x Tx/Rx for OSD function | N/A | 1 x Tx/Rx for OSD function | 1 x RS-232/422/485 | |
| Display | Input: 2 x HDMI, 1 x VGA | Input: 1 x HDMI, 1 x DP, 1 x VGA | Input: 1 x HDMI, 1 x DP | Input: 1 x HDMI, 1 x DP, 1 x VGA | Input: 1 x HDMI, 1 x DP | Output: 1 x HDMI | |
| USB | Upstream: 1 x USB 2.0 Type B Downstream: 1 x USB 2.0 Type A | 2 x USB 2.0 1 x Micro USB for Touch only | | | | 2 x USB 3.0 | |
| Ethernet | N/A | 1 x Gigabit Ethernet | | | | 2 x Gigabit Ethernet | |
| Audio | 2 x 2W Speaker, 1 x Line out, 1 x Line in | 2 x 3W Speaker | | | | 2 x 3W Speaker | |
| OSD Key | Power / Menu / Right / Left / Auto | Power / Menu / Right / Left / Auto | | | | N/A | |
| Power | | | | | | | |
| Power Input | DC 20V via DC Jack | DC 12V via DC Jack | | DC 24V via 3-pin terminal block connector | | DC 12V via DC Jack | DC 24V via 3-pin terminal block connector |
| Power Supply | 45W AC-DC Adapter, Power Cord | 40W AC-DC Adapter | | 60W AC-DC Adapter | | 65W AC-DC Adapter | 60W AC-DC Adapter |
| Environmental | | | | | | | |
| Mounting (mm) | Standalone; VESA® Mount 75 x 75 | Standalone; VESA® Mount 75 x 75 | | | | Standalone; VESA® Mount 75 x 75 | |
| Accessory | 1 x HDMI cable, 1 x USB 2.0 Type B to A cable | 1 x VGA cable | N/A | 1 x VGA cable | N/A | N/A | |
| OP /Storage Temperature | 0~40°C / -25~55°C | | 0~50°C / -20~60°C | | | 0~50°C / -20~60°C | |
| IP Protection | IP65 (Front) | | IP65 (Front) | | | IP65 (Front) | |
| Certificate | CE / FCC Class B | | CE / FCC Class A | | | CE / FCC Class B | |