

PEAI-9910 Series



Edge AI Systems with Intel® 13th/14th Generation Core™ i3/i5/i7/i9

- Offering powerful GPU solution
- Supports Intel® 13th/14th Generation Core processors Family in LGA1700 package
- Compatible with ASUS AIoT software package :
 - AISVISION
 - AISEHS



WEBS-89H2



Embedded Rugged System with Intel® 10th Generation Core™ i3/i5/i7/i9 processor, 4x PoE LAN and 16x DI + 16x DO support

- Rugged platform to support wide operating temperature -20 ~ 60°C with Intel® 10th gen Core™ i3/i5/i7/i9 processor
- 6 x RJ45 GbE Ethernet ports including 4x PoE support
- 2 x RS-232/485 selectable by switch
- 1 x mSATA, 1x M.2 B Key 2280 and miniPCIe for Wi-Fi/4G options
- Support 16x DI and 16x DO



WEBS-8910



Embedded Rugged Fan-less System with Intel® Celeron® J6412 SoC and HDMI , DisplayPort and 3x GbE LAN supported

- Fanless platform to support wide operating temperature -20 ~ 60°C
- with Intel® Celeron® J6412 SoC
- 3 x RJ45 GbE Ethernet ports
- 1 x RS-232 and 1x RS-485 supported
- 1 x M.2 2242 for SSD and 1x miniPCIe for Wi-Fi/4G options



PJAI Series



Fanless Compact System with NVIDIA® Jetson Orin Nano™/NX™ for Edge AI Applications

- Fanless System with NVIDIA® Jetson Orin Nano™/NX™ SOM
- 1x M.2 2242/2280 M-Key for NVMe (PCIe x4)
- 1x M.2 2230 E-Key for Wi-Fi 6(E)/BT
- 1x M.2 3042/3052 B-Key and 2x SIM for 4G/LTE
- 2x GbE RJ45 and 3x USB 3.2 Type A



WEBS-21J0-KL72



Embedded Edge AI Fan-less System with Intel Atom® x7000E Series and Kneron KL720 AI module

- Support low-power Intel Atom® x7000E and high performance Intel® Core™ i3 N-Series SoC
- Kneron KL720 AI module included for energy-efficiency Edge AI applications
- One SATA port and One M.2 2280 B-Key (SATA III)
- Dual displays with one DisplayPort 1.4 and one HDMI 2.0
- One M.2 2230 E-Key



WEBS-2110-H8



Embedded Edge AI Fan-less System with Intel® Atom® x6000E Series and Hailo-8™ AI module

- Powered by Intel® Atom® Elkhart Lake Dual/Quad-core™ x6000E Series SoC
- Hailo-8™ AI module up to 26 TOPS included for Edge AI applications
- Support 1x 2.5" SSD, 1x mSATA and 1x MicroSD
- Triple Displays with VGA, DP and HDMI
- 1x M.2 and 1x Full-size Mini-PCIe socket (Optional from mSATA or mini-PCIe by BIOS)



Portwell



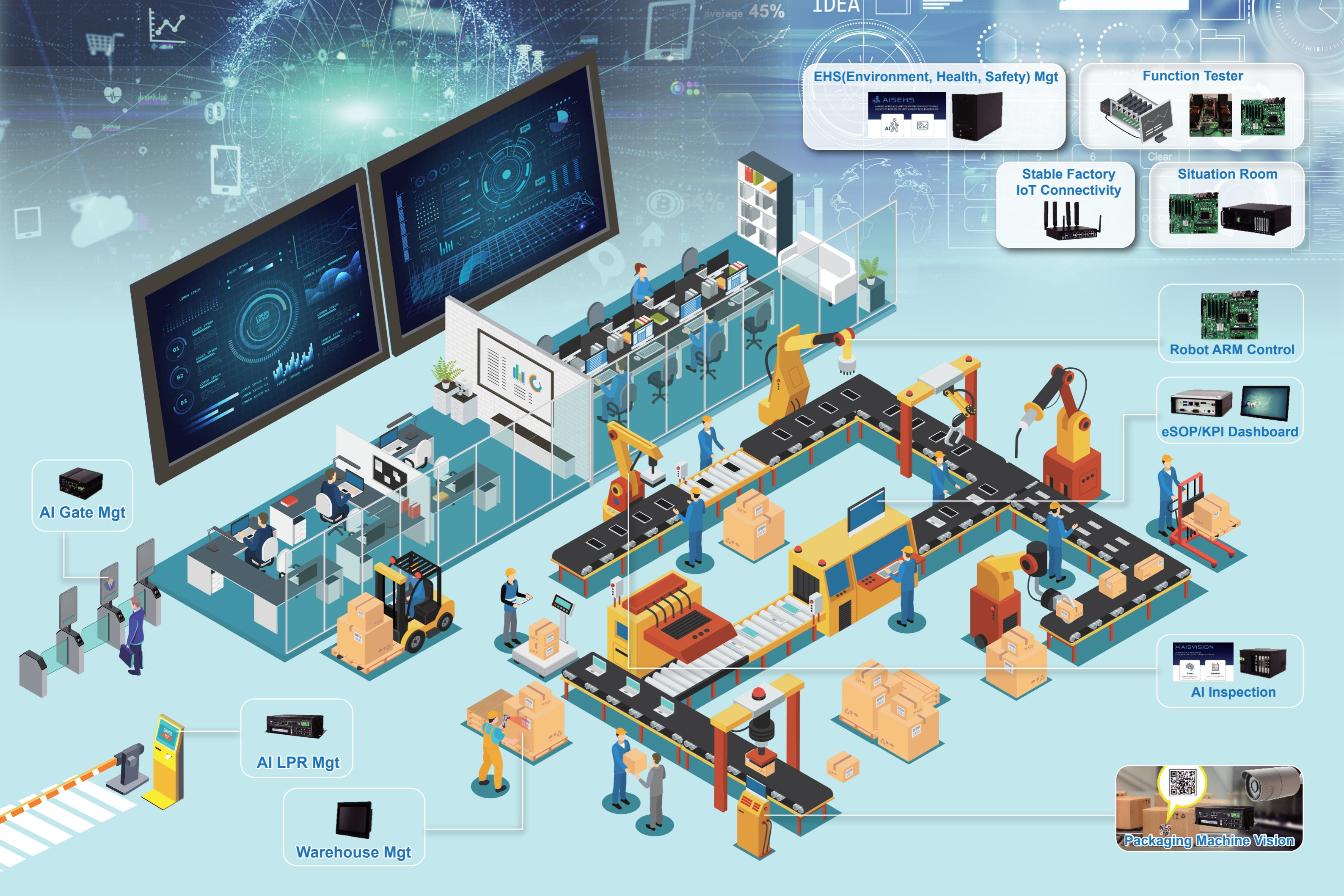
Vertical-Automation

Portwell Edge AI Solutions



European Portwell Technology B.V.


Schillingweg 3, 2153 PL Nieuw Vennep, The Netherlands
Phone: +31-252-278800 | E-mail: info@portwell.eu
<https://www.portwell.eu>



EHS(Environment, Health, Safety) Mgt



Function Tester




Stable Factory IoT Connectivity



Situation Room



Robot ARM Control



eSOP/KPI Dashboard



AI Inspection



Packaging Machine Vision



AI Gate Mgt



AI LPR Mgt



Warehouse Mgt

