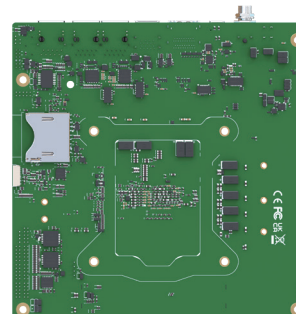
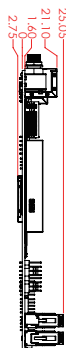
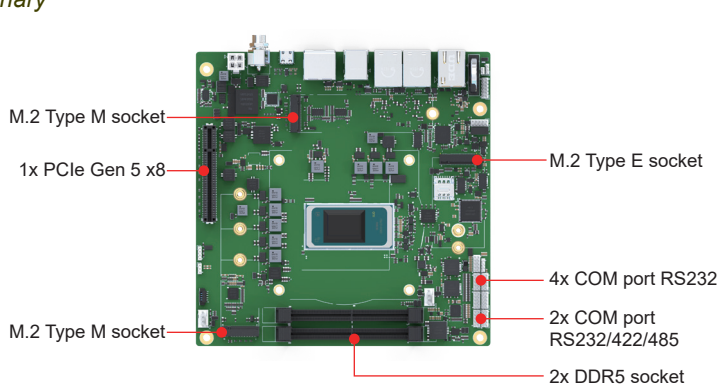


WADE-807A

Intel® Core™ Ultra processors (Series 3) based Mini-ITX embedded board with DDR5, PCIe Gen 5, triple displays, M.2, USB 3.2, USB Type C

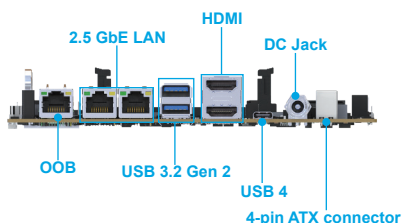
Preliminary



FEATURES

- Intel® Core™ Ultra Processors (Series 3) (formerly Panther Lake-H) 15W~65W
- Up to 180 platform TOPS AI performance
- Support DDR5 non-ECC SO-DIMM 7200MT/s up to 64GB
- Support 2x HDMI®, 1x USB-C (DP Alt Mode)
- Support OOB function: Remote PWR on/off, Remote Reset, SOL, BIOS recovery

Rear I/O



Ordering Guide

P/N: TBD	(R).WADE-807A. Mini-ITX ESB.Intel Panther Lake H484 4Xe. w/o ECC BGA.w/DDR5 SO-DIMM /USB-C/HDMI®/Triple GbE/COM/Audio/USB
----------	---

Packing List

One WADE-807A Main board
One I/O shield

General

Processor	Intel® Core™ Ultra Processors (Series 3), 65W TDP
BIOS	AMI uEFI BIOS
Memory	Support up to 64GB DDR5 7200 MT/s on 2 non-ECC SODIMM
Watchdog Timer	Programmable, time out period from 1 sec to 255 secs
Graphic Controller	Intel® Xe LPG Graphics

Rear I/O

Ethernet	- 1x Intel I210AT with GbE LAN 10/100/1000 Mbps (Support OOB w/ BIOS recovery, Power On/Off, Reset, SOL) - 2x Intel® I226V with 2.5 GbE LAN 10/100/1000/2500 Mbps
USB	- 2x USB 3.2 Gen2 Type A - 1x USB4 Type C (Support DP 1.4a display output)
Display	2 x HDMI® 2.1 8192 × 4320@60Hz

Expansion I/O

PCIe	1x PCIe Gen5 x8 Open Slot
Audio	1x Pin Header support Line-in , Line-out , Mic-in w/ Realtek ALC897
Serial Port	- 4x Pin Header support RS-232 - 2x Pin Header support RS-232/422/485
USB	2 x USB 2.0 Pin Header
M.2	- 1x M.2 M Key 2242 2260 2280 support PCIe x4 - 1x M.2 M Key 2280 support PCIe x4 - 1x M.2 B Key 3042 3052 support USB 2.0, USB 3.2, PCIe x1
SIM	1 x Nano SIM slot
Security	TPM 2.0 (On Board IC)
GPIO	1x 8-bit Digital I/O
Others	1x SMBus

Mechanical/Environment

Dimension	170 x 170 mm (6.69" x 6.69")
Power Supply	DC Jack , 4-pin ATX connector 12~24V
Operating Temperature	0 ~ 60 °C (32 ~ 140 °F)
Storage Temperature	-40 ~ 85 °C (-40 ~ 185 °F)
Relative Humidity	5% to 95%, non-condensing
Certification	CE/FCC
OS	Windows 11 IoT Enterprise 2024 LTSC
Portwell Special Feature	OOB API, PET, RPET

*All information provided is subject to change without notice. Last updated: January 2, 2026