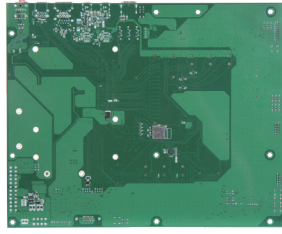
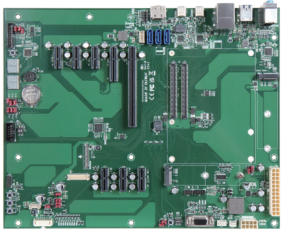


# PCOM-C60F

ATX Form Factor (305 x 244 mm) Carrier Board for Type 6 COM Express Module



## FEATURES

- ATX form factor carrier board for COM Express Type 6 (Basic & Compact)
- ATX layout for expanded I/O and flexible integration with industry-standard mounting
- High-speed interfaces:
  - 2x USB Type-C (USB4 & DDI), 4x USB 3.2 (Type-A)
  - 3x SATA III
  - PCIe Gen4: x16 (PEG), x4, multiple x1
  - M.2 Key B & M
  - 2.5GbE LAN (RJ45)
- Wide operating temperature: -40°C to 85°C



Portwell's PCOM-C60F supports COM Express Type 6 modules in Basic and Compact sizes on a standard ATX form factor (305 x 244 mm). This carrier board has undergone Portwell's internal evaluation testing and delivers a rich set of high-speed interfaces, including PCIe Gen4, USB4, and SATA, along with essential legacy I/O such as UART, GPIO, SMBus, and I<sup>2</sup>C.

## General

Product	PCOM-C60F
Form Factor	ATX size (305 x 244 mm)
Supported Module	COM Express Type 6 , Basic & Compact sizes
General Function	RTC battery BIOS SPI socket Power BTN / Reset BTN / Rapid shutdown BTN / Sleep BTN / LID BTN One VGA port Audio Jack

## I/O Interface

SATA	3 x SATA III
USB	2x USB Type-C ports 4x USB Type-A ports
Ethernet	1x 2.5GbE RJ45
Serial I/O	GPIO
	I <sup>2</sup> C
	SMBus
	UART
PCI Express	1x PCIe 4.0 x16 connector 1x PCIe 4.0 x4 connector 6x PCIe 4.0 x1 connectors 1x M.2 Key M
Others	1x System fan connector (4-pin PWM, smart fan control) (Temperature and voltage monitoring)

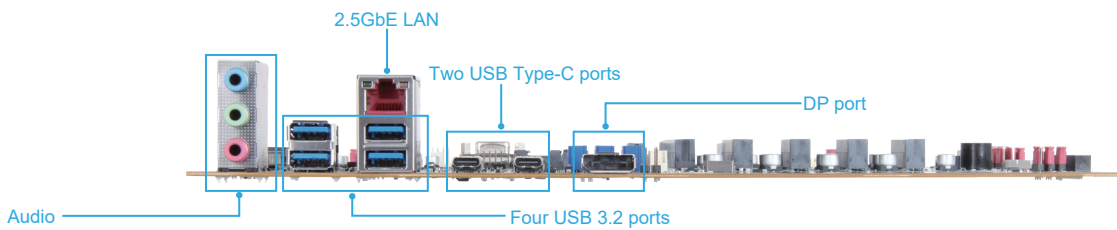
## MECHANICAL & ENVIRONMENT

Dimension	305mm x 244mm
Storage Temperature	-40°C to 85°C
Operating Temperature	-40°C to 85°C
Storage Humidity	0% to 95%
Operation Humidity	0% to 95%

## ORDERING GUIDE

Product	Ordering P/N	Status
PCOM-C60F	AB1-3U26Z	In Development

## REAR I/O



## BLOCK DIAGRAM

### PCOM-C60F

