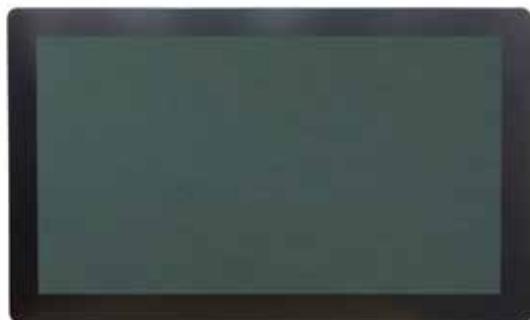


MD-215P



- 21.5" 1920x1080 (FHD) Resolution
- Metal Cabinet with Diverse Installing Options
- Made in Taiwan, 3 Years Warranty
- Designed for All Environments
- High Brightness Option
- AG/AR/AF Film Options
- All Kind of Connectors Option (VGA/DVI/HDMI/DP)

I/O Interfaces

Standard	VGA x1, DVI x1
Audio Input	TRS connector 3.5mm of stereo x1
Speaker	2W x2

Mechanical

Cabinet	536x327.5x46 mm
Dimension (Max)	536x327.5x46 mm
Wall Mount Hole	75x75 / 100x100 mm
Net Weight	≤ 6.29 KG

Power

Power Input	DC-12V, with AC/DC Adapter 100~240V
Power Connector	DC Jack Φ2.1mm

Environmental

Operating Temperature	0~50°C
-----------------------	--------

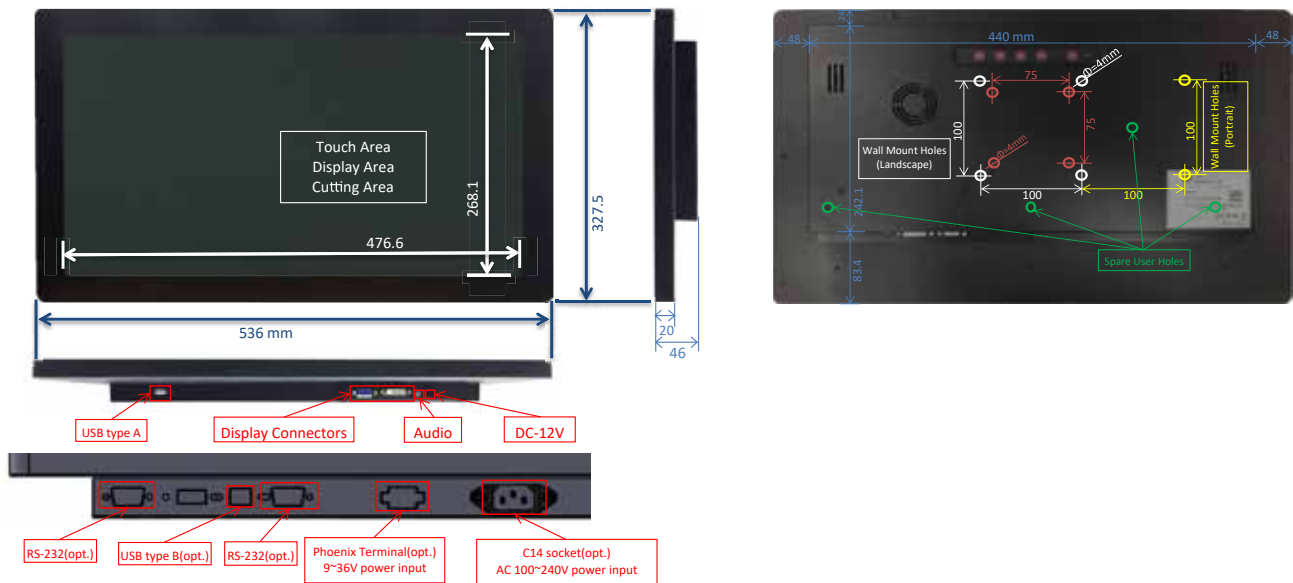
General

Screen Diagonal	21.5 inch
Display Area	476.64x268.11 mm
Resolution	1920x1080 (FHD)
Brightness(nits)	250
Contrast Ratio	1000:1
Display Ratio	16:9
Support Color	16.7M Color
Pixel Pitch	0.245x0.245 mm
Response Time	18 msec
Backlight Unit	LED (white LED)
Viewing Angle (L/R,U/D)	178° / 178° (VA type)
Backlight Life Time	30000 HRS
Surface Treatment	Anti-glare, Hardness 3H

Option

Brightness	1000/1500
Display Input Option	VGA + HDMI + DVI/VGA + HDMI + DP/VGA + HDMI + RS-232
Surface Film Options	AFP(Anti-Fouling/Fingerprint)/AR(Anti-Reflective)/AS(Anti-Spy)
Cabinet Options	Stainless Steel/Aluminum

Dimensions



Ordering Information

Monitor

Model Number	AL8-3056
Description/Configuration	21.5" 1920x1080 (FHD 16:9)/Industrial Touch Display/5 Wire Resistive Touch/VGA/DVI

Accessories

Model Number	AL8-3046
Description/Configuration	9~36V Adapter for MD-150R/MD-150P/MD-156R/MD-156P/MD-170R/MD-170P/MD-185R/MD-215R/MD-215P



Tel: +886-2-7739-5566
 Fax: +886-2-7715-0609
 Mail: info@Mitwell.com.tw
 Address: No.55, Ln. 6, Chenglin Rd., Tucheng Dist., New Taipei City 236, Taiwan (R.O.C.)