

RS4U-1703-IAC



Powerful, Durable & Reliable
Japan design & Made-In-Taiwan

Node System for Industrial Automation & Control Targeting Industrial Automation Control

Key Features

- Skylake-S Desktop platform
- Japan Design & MIT quality
- Integrated I210 GbE x2 with EtherCAT optional 3rd party driver support
- Four DIMM slots, up to 64GB memory support
- API function control by Super IO
- Support 2x PCIe x16 slot with 16 lanes

Key Benefits

- Desktop platform
- Higher quality Industrial PC
- EtherCAT optional support available
- Easy to strengthen memory capacity
- Easy H/W control by API
- PCIe expansion for graphic card & FPGA card

Specification

Chassis	IRC-307
PSU	400W, Delta DPS-400AB
Storage	DVD-RW
M/B	RUBY-SQ1703, w/i7-6700 CPU, 8GB DDR4 memory
Operating System	N/A
Operating Temperature	0~50 °C

Memory

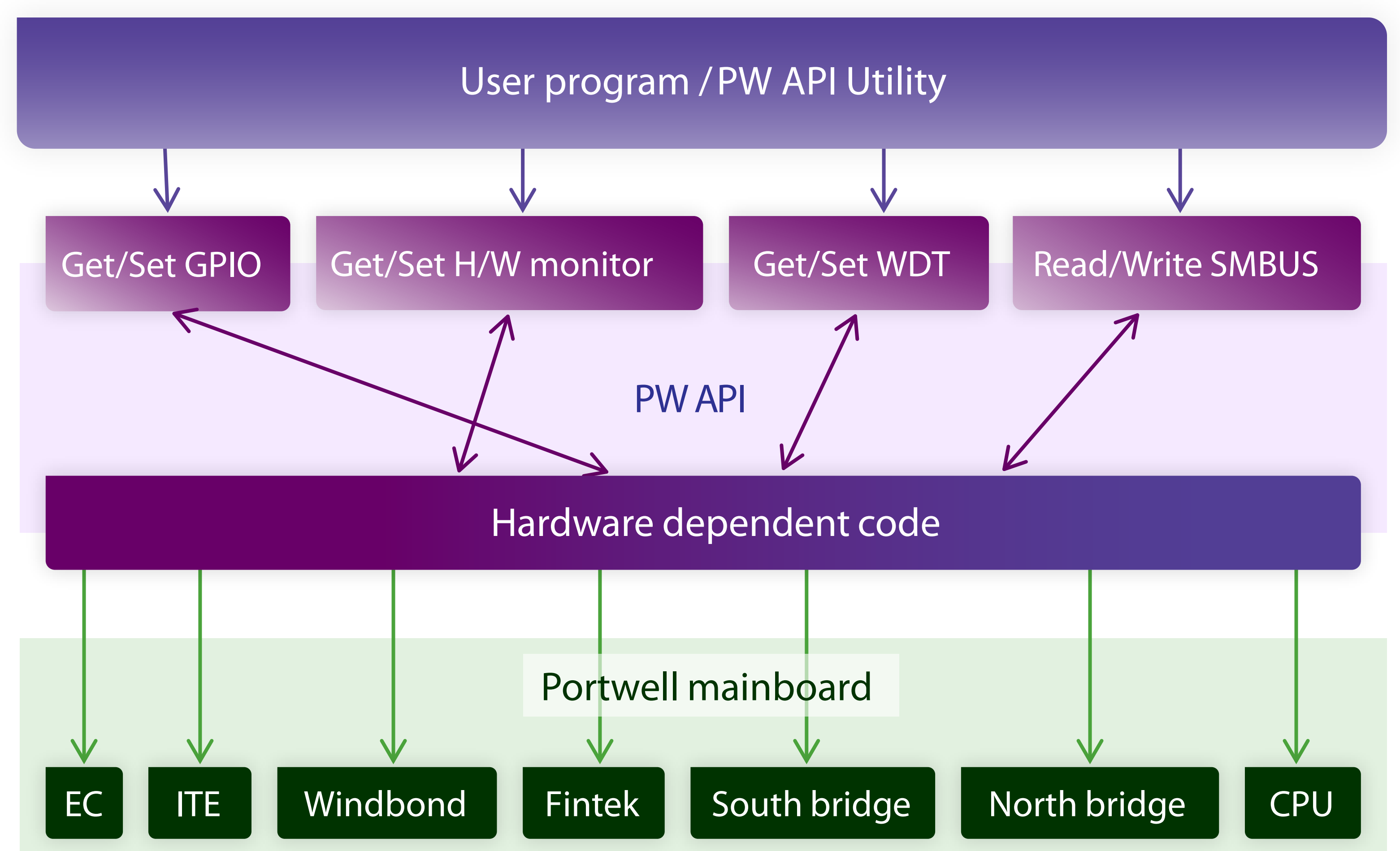
DDR4 R-DIMM		
B473F860	8GB	(GP) DDR4 R-DIMM DRAM Module 8GB DDR4-2133, 1.2V, 512x8. SK Hynix

EtherCAT & CANbus

Model	FC1100	GC-CAN-PCI	CAN-PCI/266	CAN-PCIe/400	CAN-PCIe/402	LPE-C122	CAN-PCIe-01
Interface	PCI	PCI	PCI	PCIe x1	PCIe x1	PCIe x1	PCIe x1
Application	EtherCAT	CANbus	CANbus	CANbus	CANbus	CANbus	CANbus

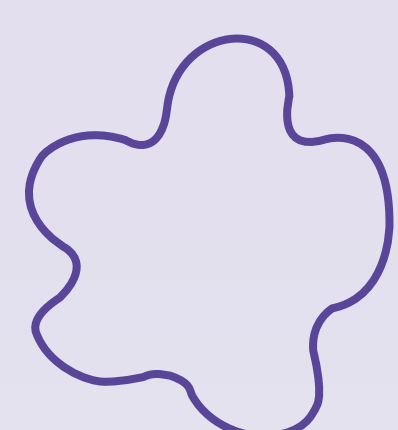
API: Application Programming Interface

Portwell API(Application Programming Interface) is a bridge to simplify and enhance H/W & S/W application implementation efficiency



What API do ?

- Hardware monitor- (PWR, Temp, Fan speed)
- Fan control - (Temp controls fan speed)
- GPIO control (programmable)
- WDT (Reset, Show-down, NMI)
- SMBus (controlled by PCH)
- I²C



Portwell, Inc. Headquarters

No. 242, Bo'AI St., Shu-Lin Dist,
New Taipei City 238, Taiwan
Tel: +886-2-77318888
Fax: +886-2-77319888
E-mail: info@portwell.com.tw
http://www.portwell.com.tw

American Portwell
(Fremont, CA)
44200 Christy St., Fremont, CA 94538, USA
Tel: +1-510-403-3399
Fax: +1-510-403-3184
E-mail: info@portwell.com
http://www.portwell.com

Portwell Japan, Inc.
(Tokyo)
〒112-0011 4-27-10, Sengoku,
Bunkyo-ku, Tokyo, Japan
Tel: +81-3-6902-9225
Fax: +81-3-6902-9226
E-mail: info@portwell.co.jp
http://www.portwell.co.jp

Portwell Japan, Inc.
(Osaka)
〒532-0004 Ste.501 Nippo Shin-osaka
Dai-2 Bldg, 1-8-33 Nishi-Miyahara,
Yodogawa-ku Osaka Japan
Tel: +81-6-4807-7721
Fax: +81-6-4807-7720
E-mail: info@portwell.co.jp
http://www.portwell.co.jp

Portwell Korea, Inc.
O-BIZ Tower 1901, No.126,
Beolmal-ro, Dongan-gu, Anyang-si,
Gyeonggi-do, Korea, 431-060
Tel: +82-31-450-3043
Fax: +82-31-450-3044
E-mail: info@portwell.co.kr
http://www.portwell.co.kr

Shanghai Portwell
(201612), Room 1303-1, Building 33,
No.258, Xinhuan Highway, Songjiang
District, Shanghai
Tel: +86-21-5771-2505
Fax: +86-21-5772-2965
E-mail: info@portwell.com.cn
http://www.portwell.com.cn

Portwell Latin America
(Brazil)
Rua Engenheiro Roberto Fischer, 208,
Sala No.3-Parque Industrial software
CEP 81250-025-CIC-Curitiba-Brazil
Tel: +55-41-3121-7200
Tel: +55-41-3121-7201
E-mail: vendas@portwell.com.br
http://www.portwell.com.br

European Portwell
Schillingweg 3, 2153 PL
Nieuw Vennepp, The Netherlands
Tel: +31-252-620790
Fax: +31-252-621325
E-mail: info@portwell.eu
http://www.portwell.eu

Portwell UK Ltd.
Office TH2
Trident House, Trident Park Basil
Hill Road, Didcot, OX11 7HJ, UK
Tel: +44-1235-750760
Fax: +44-1235-750761
E-mail: info@portwell.co.uk
http://www.portwell.co.uk

Portwell Deutschland GmbH
Otto-Hahn-Str. 48, D-63303 Dreieich
Tel: +49-6103-3008-0
Fax: +49-6103-3008-199
E-mail: info@portwell.eu
http://www.portwell.de

Portwell India Technology
2nd Floor, 5M-665, 5th Main Road, OMBR
Layout, Banaswadi, Bangalore -560043,
India
Tel: +91-80-41684255
E-mail: info@portwell.in
http://www.portwell.in